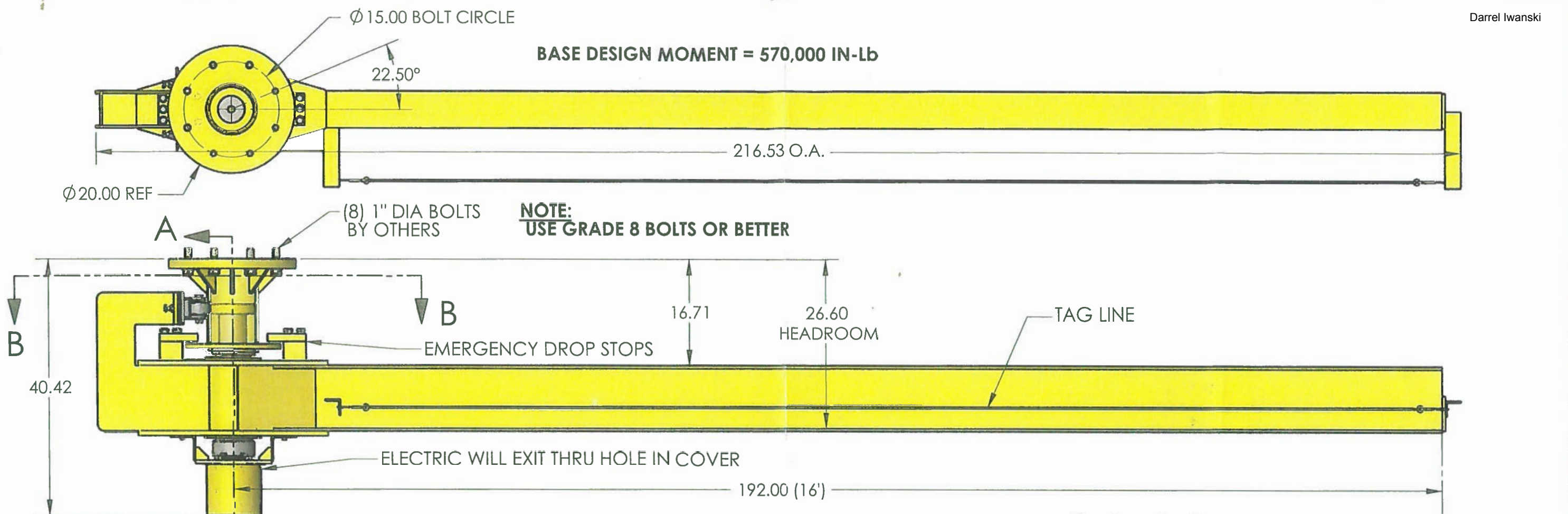
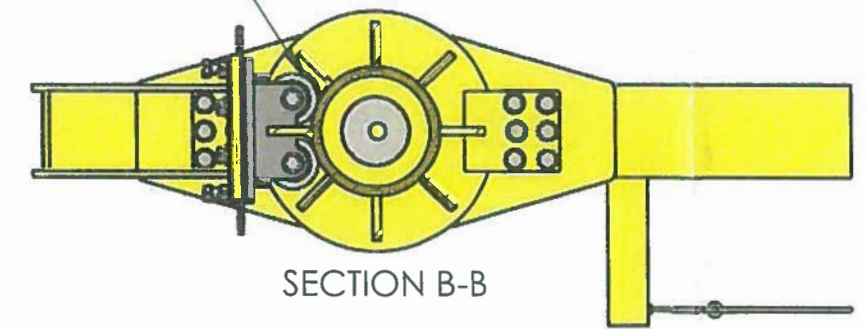


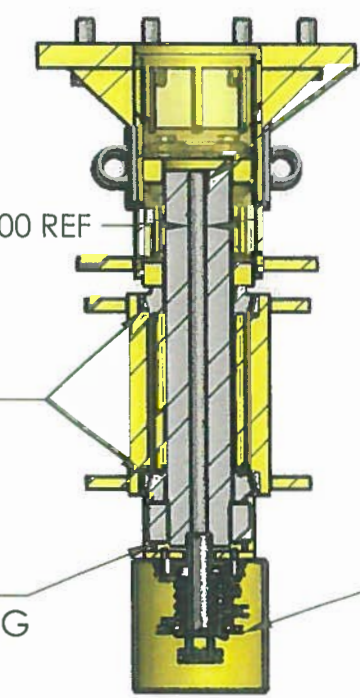
BASE DESIGN MOMENT = 570,000 IN-Lb



CAM FOLLOWER ROLLERS FOR SMOOTH OPERATION



SECTION B-B



SECTION A-A

ELECTRIC SUPPLY THRU 1" HOLE IN SHAFT FROM CEILING MOUNTING AREA

NOTE:
WE WILL NEED TO KNOW ELECTRICAL REQUIREMENTS OF THE HOIST (VOLT, AMPS, PHASE ECT.) AND ALSO A PDF OF THE ELECTRICAL SCHEMATIC FOR THE HOIST ITSELF.

IF THERE IS ANY OTHER INTERFACE REQUIREMENTS PLEASE SEND ALSO.

"ELECTRICAL & CONTROLS BY OTHERS"

360° ROTARY ELECTRICAL SLIP RING

INSUL 8: #XA-RA-DO4T
35 AMP, 600V, #10 WIRE WITH TERMINAL BLOCK

NOTE:
USE GRADE 8 BOLTS OR BETTER

(8) 1" DIA BOLTS BY OTHERS

B CLEAN AND PAINT SAFETY YELLOW, DECAL PER DRAWING OR STANDARD PRODUCT PRACTICE.

A STAMP NAMEPLATE:

THE CALDWELL GROUP Rockford, Illinois	
RATED CAP.	2,000 lbs
MODEL NO.	A360-C-16
SERIAL NO.	19358
WEIGHT	1131

THIS APPROVAL DRAWING PROPERTY OF CALDWELL GROUP INC. NOT TO BE COPIED OR REPRODUCED AND MUST BE RETURNED ON REQUEST		THIS ORDER WILL NOT BE RELEASED FOR MANUFACTURE UNTIL APPROVALS HAVE BEEN SIGNED AND RETURNED	
APPROVED	<input type="checkbox"/>	APPROVED	<input type="checkbox"/>
APPROVED AS NOTED	<input type="checkbox"/>	UNAPPROVED	<input type="checkbox"/>
UNAPPROVED	<input type="checkbox"/>	PLEASE VERIFY CRANE HOOK WILL FIT BAIL OPENING	<input type="checkbox"/>
RESUBMIT W/CHANGES	<input type="checkbox"/>	SIGN _____	DATE _____

THIS DRAWING IS THE PROPERTY OF THE CALDWELL GROUP. IT SHALL NOT BE COPIED (IN WHOLE OR IN PART) FOR MANUFACTURE OR OTHERWISE DISCLOSED WITHOUT PRIOR WRITTEN CONSENT OF THE CALDWELL GROUP.

ESTIMATED WEIGHT: WEIGHT: 1131

FIRST ORDERED ON: 19358

TOLERANCES	
MACHINING	FABRICATION
X ± .040	ALL ± .06
XX ± .020	ANGULAR 2°
XXX ± .010	ALL FINISHES 125mu
XXX ± .005	DEBURR ALL SHARP CORNERS OR EDGES
ANGULAR ± 1/2°	



SCALE: 1:16

DRAWN BY: DPC

DATE: 4/8/10

CHECKED BY: -

DATE: -

TITLE: CEILING MNT JIB CRANE

REV - SHEET 1 OF 1

DWG NO: 19358 APPROVAL